

IRRIGATION SCHEDULE

SYMBOL	MANUFACTURER/MODEL/DESCRIPTION	QTY	PSI	GPM	RADIUS
	Rain Bird 1806-PRS 15 Series MPR Turf Spray 6" popup with pressure regulator.	26	30		
	Rain Bird 1806-PRS ADJ Turf Spray 6" popup with pressure regulator.	1	30		
	Rain Bird 1802-1400 Flood Flood Bubbler 2in. popup, install w/ PA-80 adapter.	43	40		
SYMBOL	MANUFACTURER/MODEL/DESCRIPTION	QTY	PSI	GPM	RADIUS
	Rain Bird 3500-S 3.0 Shrub Rotor, adjustable and full circle	7	25	2.17	29'
	Rain Bird 3500-S 4.0 Shrub Rotor, adjustable and full circle	1	25	2.97	31'
SYMBOL	MANUFACTURER/MODEL/DESCRIPTION	QTY			
	Rain Bird PESB-PRS-D 1" 1in., 1-1/2in., 2in., 3in., 3in. Plastic Industrial Remote Control Valve. Low Flow Operating Capability, Globe Configuration, With Pressure Regulating Module, and Scrubber Technology for Reliable Performance in Dirty Water Irrigation Applications.	7			
	Febco 765 1" Pressure Vacuum Breaker, brass with ball valve SOV. Install 12in. 1 above highest downstream outlet and the highest point in the downstream piping.	1			
	Rain Bird ESPLXME2P-LXMM-LXMPED 12 Station, Traditionally-Wired Commercial Controller w/ Factory Installed PRO Smart Module. Indoor/Outdoor, Plastic Wall-Mount Enclosure. Install in LXMM-LXMPED Powder Coated, Metal Wall-Mounted Cabinet w/ Pedestal.	1			
	Rain Bird RSD-BEX Rain Sensor, with metal latching bracket, extension wire.	1			
	Water Meter 3/4" New 3/4" Water Meter	1			
	Irrigation Lateral Line: PVC Class 160 SDR 26 1/2"	885.8 lf			
	Irrigation Lateral Line: PVC Class 160 SDR 26 3/4"	227.5 lf			
	Irrigation Lateral Line: PVC Class 160 SDR 26 1"	105.0 lf			
	Irrigation Lateral Line: PVC Class 160 SDR 26 1 1/4"	82.7 lf			
	Irrigation Mainline: PVC Class 200 SDR 21 1 1/2"	270.3 lf			

VALVE SCHEDULE

NUMBER	MODEL	SIZE	TYPE	GPM	HEADS	PIPE	WIRE	DESIGN PSI	FRICTION LOSS	PSI	PSI @ POC	PRECIP
1	Rain Bird PESB-PRS-D	1"	Turf Spray	17.81	10	148.3	41.7	30	0.91	33.6	43	0.9 in/h
2	Rain Bird PESB-PRS-D	1"	Turf Spray	14.8	4	61.5	104.5	30	0.86	33.2	40.9	0.71 in/h
3	Rain Bird PESB-PRS-D	1"	Shrub Rotor	18.16	8	248.7	144.9	25	2.79	30.5	40.9	0.66 in/h
4	Rain Bird PESB-PRS-D	1"	Bubbler	10.75	43	637.2	162.9	40	1.94	43.8	49.7	0.86 in/h
5	Rain Bird PESB-PRS-D	1"	Turf Spray	14.8	4	60.0	168.7	30	0.84	33.2	41.2	0.71 in/h
6	Rain Bird PESB-PRS-D	1"	Turf Spray	14.8	4	59.8	225.3	30	0.84	33.2	41.5	0.71 in/h
7	Rain Bird PESB-PRS-D	1"	Turf Spray	18.5	5	85.5	272.1	30	1.26	34.0	45.6	0.74 in/h
	Common Wire						270.3					

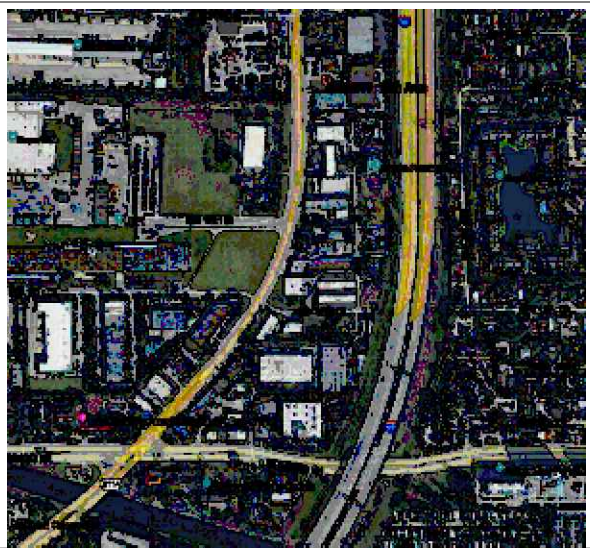
WATERING SCHEDULE

NUMBER	MODEL	TYPE	PRECIP	IN./WEEK	MIN./WEEK	GAL./WEEK	GAL./DAY
1	Rain Bird PESB-PRS-D	Turf Spray	0.9 in/h	1	67	1,194	
2	Rain Bird PESB-PRS-D	Turf Spray	0.71 in/h	1	85	1,258	
3	Rain Bird PESB-PRS-D	Shrub Rotor	0.66 in/h	1	91	1,653	
4	Rain Bird PESB-PRS-D	Bubbler	0.86 in/h	1	70	753	
5	Rain Bird PESB-PRS-D	Turf Spray	0.71 in/h	1	85	1,258	
6	Rain Bird PESB-PRS-D	Turf Spray	0.71 in/h	1	85	1,258	
7	Rain Bird PESB-PRS-D	Turf Spray	0.74 in/h	1	81	1,499	
	TOTALS:				564	8,871	

CRITICAL ANALYSIS

Generated:	2025-04-15 14:16
P.O.C. NUMBER: 02	
Water Source Information:	New 3/4" Water Meter
FLOW AVAILABLE	
Water Meter Size:	3/4"
Flow Available:	22.5 GPM
PRESSURE AVAILABLE	
Static Pressure at POC:	50 PSI
Elevation Change:	0.00 ft
Service Line Size:	3"
Length of Service Line:	20 ft
Pressure Available:	50 PSI
DESIGN ANALYSIS	
Maximum Station Flow:	18.5 GPM
Flow Available at POC:	22.5 GPM
Residual Flow Available:	4 GPM
Critical Station:	4
Design Pressure:	40 PSI
Friction Loss:	1.94 PSI
Fittings Loss:	0 PSI
Elevation Loss:	0 PSI
Loss through Valve:	1.88 PSI
Pressure Req. at Critical Station:	43.8 PSI
Loss for Fittings:	0 PSI
Loss for Main Line:	0.42 PSI
Loss for POC to Valve Elevation:	0 PSI
Loss for Backflow:	3.62 PSI
Loss for Water Meter:	1.83 PSI
Critical Station Pressure at POC:	49.7 PSI
Pressure Available:	50 PSI
Residual Pressure Available:	0.31 PSI

Michael D Grosswirth
Digitally signed by Michael D Grosswirth
Date: 2025.04.15 14:24:41 -04'00'



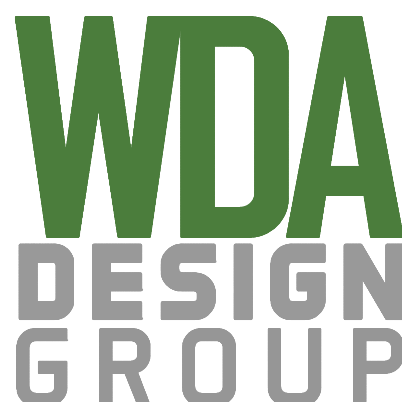
LOCUS MAP
NT.S.

THIS DOCUMENT, AS AN INSTRUMENT OF SERVICE, IS THE SOLE PROPERTY OF WDA DESIGN GROUP, INC. ITS USE BY THE OWNER FOR OTHER PROJECTS OR FOR COMPLETION OF THIS PROJECT BY OTHERS IS STRICTLY FORBIDDEN. DISTRIBUTION IN CONNECTION WITH THIS PROJECT SHALL NOT BE CONSTRUED AS PUBLICATION IN DEROGATION OF WDA DESIGN GROUP'S RIGHTS. 6/2024, WDA DESIGN GROUP, INC.

REV.	DATE	DESCRIPTION	INIT.
A		INITIAL ISSUE	



PREPARED BY:



OWNER:

JOEFFRAN
INVESTMENTS

PREPARED FOR:

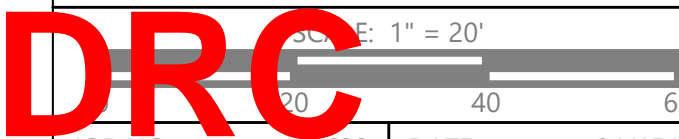
THOMAS ENGINEERING
GROUP
6300 NW 31ST AVE
FORT LAUDERDALE, FL 33309
BROWARD COUTY, FL

TITLE:

IRRIGATION PLAN

980 SW 12TH AVE
POMPANO BEACH, FL

DRC



JOB NO:	1632	DATE:	04/15/25
DWN. BY:	MDG	SHEET:	IR.01
PROJECT:	1200010		